

Your flexible CAM system for beamshaped tools



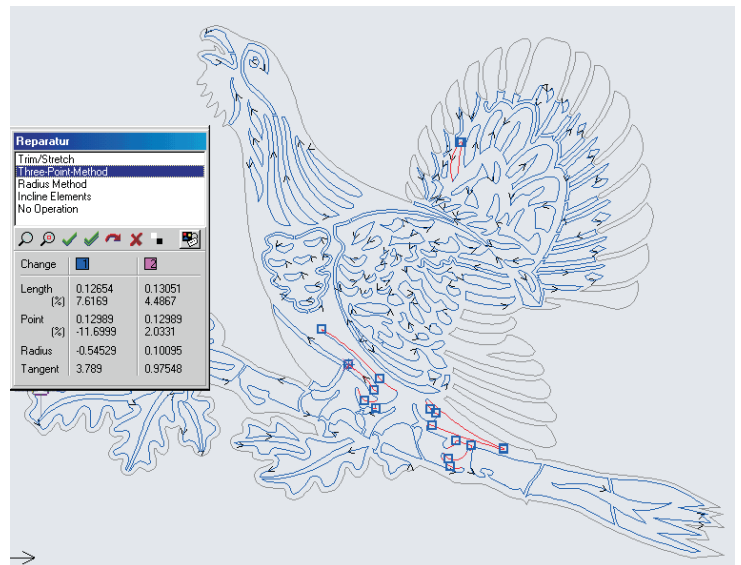
What are the capabilities of CAGILA?

ONE programming system for your shop floor

job shops
R&D companies
complex CAD data
heterogeneous CNC controls

Preparation of CAD data

- CAD interfaces with preview for **DXF, DWG, IGES, EPS, Gerber, HPGL, Tops-GEO, NC**
- Conversion of **splines and ellipses to tangential arcs** with preview
- **Recognition of arcs and reduction of elements** for CAD data with polylines
- Automatic **contour recognition** (complex drawings in just a **few seconds** !)
- NC optimized **analysis and repair** of faulty **CAD data** (small elements, repair of gaps, etc.)
- Automatic **recognition of similar contours as macros** (e.g. variants of longholes)
- **Report generator** provides important workpiece data for **calculation**
- **TrueType editor** for laser optimized text curves



Data repair with CAGILA - Fast and extensive preparation of complex CAD data from technology and design

NC technology

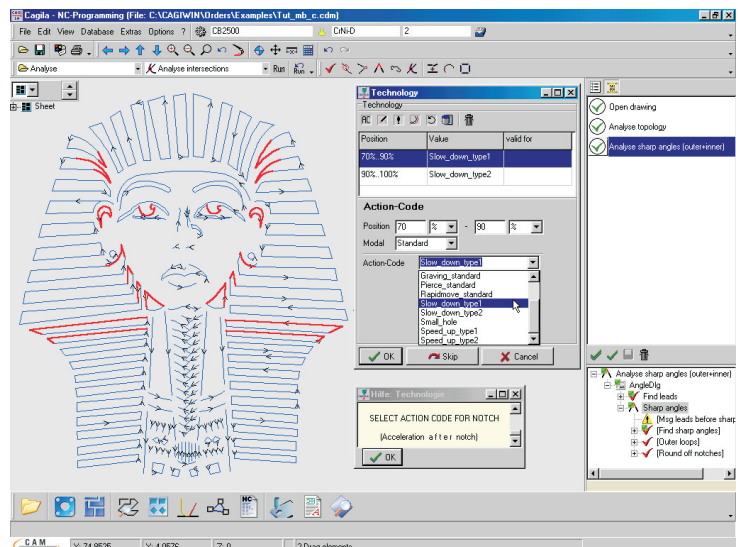
New technology concept to **reduce effort** of **NC programming** and **change of machines**:

- **Easy to handle technology of all needed process parameters** by '**Action-Codes**'
- Automatic / interactive positioning of **lead-ins** and **lead-outs**
- Automatic generation of **outer loops** and **acceleration ramps** at sharp angles

Support of all CNC controls

by new generalized NC processor:

- **Any kind of NC format** (e.g. ISO 66025, ESSI, Gerber, HPGL)
- **Real NC simulation** provides verification and calculation of old and new NC programs
- Preparation of NC code for **tube axis** by calculation of rotation angle and linear moves
- **NC subfiles and macro technology**



Easy handling of technology with 'Action-Codes'. Sets of process parameters are stored in a database defined for various manufacturing situations. A storable history list documents all user actions.

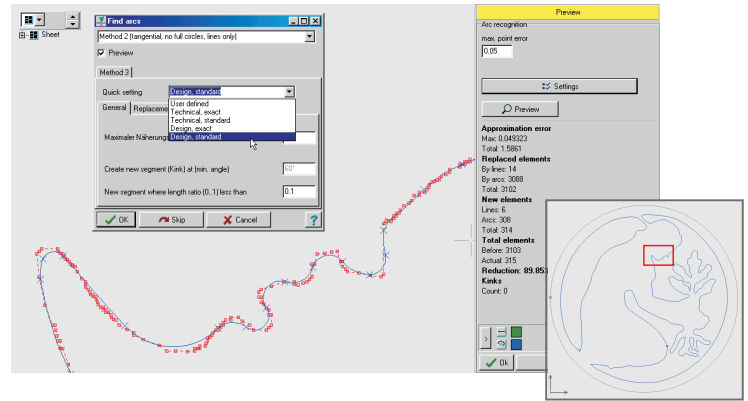


Where is CAGILA used?

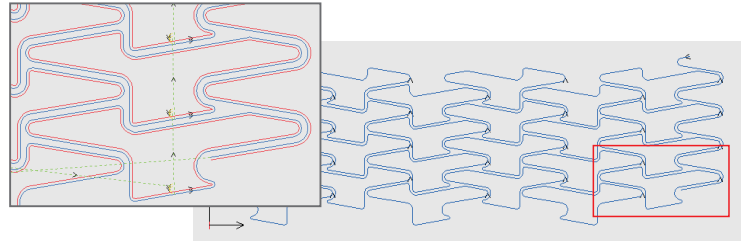
PRODUCTION

E.g. in mechanical engineering, automotive industry, electronic, medicine technology for:

- Laserbeam cutting
- Waterjet cutting
- Plasma and oxyfuel cutting
- Cut plotting
- Contour milling
- Marking, graving



Arc recognition in line based curves (e.g. scanned 50Pf logo) results in fewer elements (up to -99%) and highly improved NC path quality.



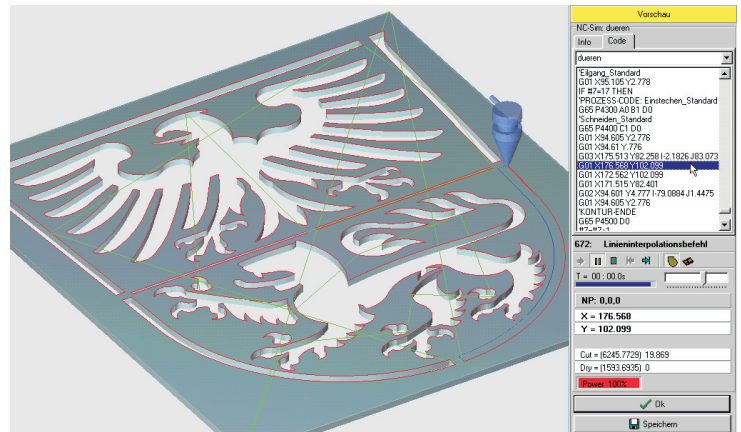
Offset can be done by G41/42 or geometrical calculation. Offset can be set separately for inner / outer as well as closed / open contours are selectable (e.g. medical stent with open segments)



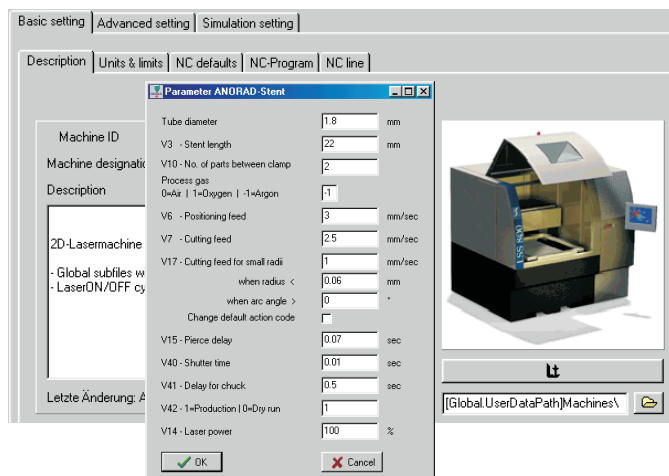
What makes CAGILA special?

ADVANTAGES

- **Fast algorithms** need only a few seconds for data preparation of complex files
- **Extensive and new methods for CAD data repair** which focus on NC optimized contour paths
- **Reduction of material costs** by optimized fully automatic nesting software
- CAGILA ist **compatible** with all common CAD systems and CNC controls
- **Flexible adaption** to solve your NC problems, but at the same time **easy to use** ('NC code by mouse click')
- **ONE system** for heterogeneous machinery
- CAGILA functions are the result of intensive **team work with jobshops and R&D companies**



Any kind of NC format can be generated by the NC processor
New or existing G-Code can be analyzed and calculated by NC simulation



Customizable NC processor offers a wide range of functionality for best adaption to the NC machine (e.g. Sinumerik, PMAC, Anorad, Aerotech, Fanuc, Mazak). Custom specific parameter windows can be generated with the strategy editor.

For more information please contact



CAM-Service GmbH
Fürstenastr. 12
D-32052 Herford
Germany

Tel: +49 (0)5221 9943-93
Fax: +49 (0)5221 9943-92
E-mail: info@cam-service.com
Internet: www.cam-service.com

Your contact partner: Dr.-Ing. Alexander Köhler

