

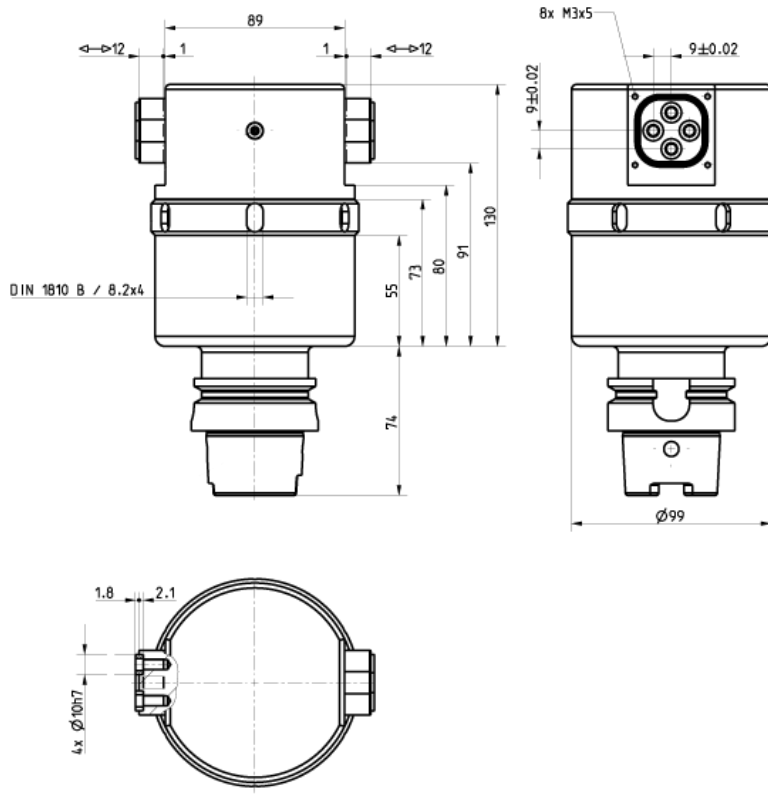


INNOVATIVE WORKPIECE-HANDLING

Parallel Gripper - Safe and precise gripping of workpieces and bars in CNC machines. The solution for easy handling of the workpiece inside the machine.

PARALLEL GRIPPING ENSURES PERFECT PART POSITIONING

- 1** The gripper is driven by tool machine coolant supply.
Opening by pressure / closing by spring load
- 2** For smooth gripping the force is adjustable by an adjustment ring.
- 3** Appropriate for axial and radial gripping operations.
- 4** Parallel gripping, therefore no relative movement
- 5** Sealed guidance



www.benz-tools.com

Technical data

Gripping force in closing	min. 460 N / max. 1.140 N
Closing time/ opening time	dependent on coolant power supply
Operating pressure	min. 20 bar / max. 50 bar
Operating temperature	min. 5 C° / max. 80 C°
Weight	approx. 4,7 kg
clamping range	2-120 mm
Repeat accuracy	$\pm 0,02$ mm
Allowable weight of workpiece	
Form fit gripping	up to 40 kg
Power fit gripping	up to 8 kg

Machine interfaces

Coromant Capto[®] C6
 HSK-A63
 KM63
 KM63 XMZ for Mazak Integrex
 VDI 40
 Others on request

Delivery Contents

Parallel Gripper
 Gripper adaptor
 Hook wrench

Accessories

Universal clamping jaws
 UB-UPG-01 for individual
 configuration



129532_09/08