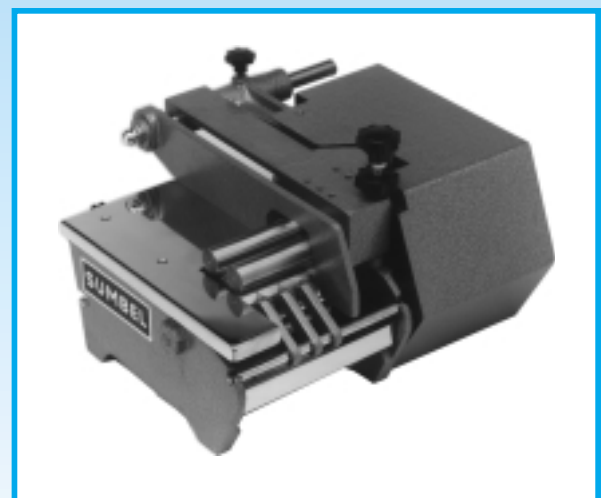


**Over 50 years  
in business  
specialising in ....**



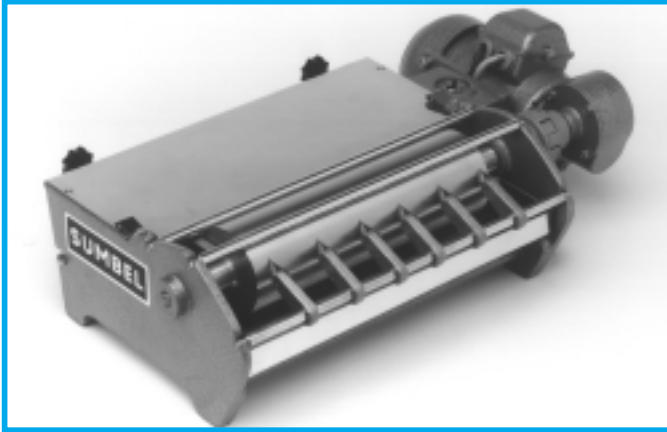
**Gluing Machines  
Edge Gluers  
Pressing Machines**



*Sumbel*



# Sumbel - Gluing Machines



## Model ENANO

Single roller gluing machine for paper, labels etc. motor-drive 230 V. AC. or other voltages.

**Working size:** 150, 250, 350, 400 mm

### Options:

- additional pressure rollers for thin carton, filled envelopes etc.
- adjustable speed
- glue roller and glue tray in stainless steel.

## Model CORONA

Gluing Machine with automatic feeding of label etc., adjustable speed motor drive 230 V. AC. or other voltages.

**Working size:** 150, 250, 350 mm

### Options:

- single label attachment
- additional attachment for extra long labels
- glue roller and trays in stainless steel



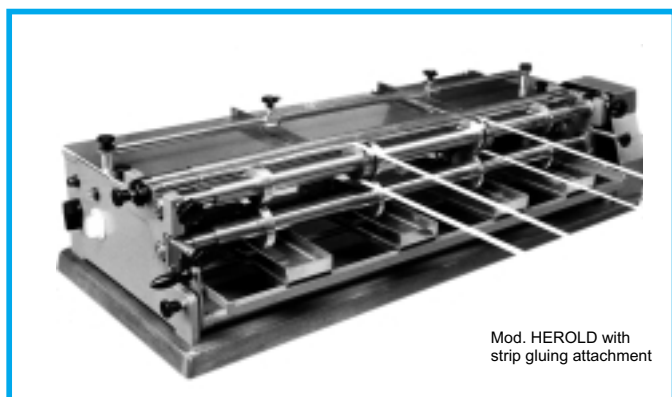
## Model ROLAND / HEROLD

Two roller gluing machine for cold and hot glue, adjustable speed, motor drive 230 V. AC. or 400 V. DC other voltages on request.

### Working size

Model ROLAND: 200, 250, 350 mm

Model HEROLD: 500, 650, 800, 1000 mm

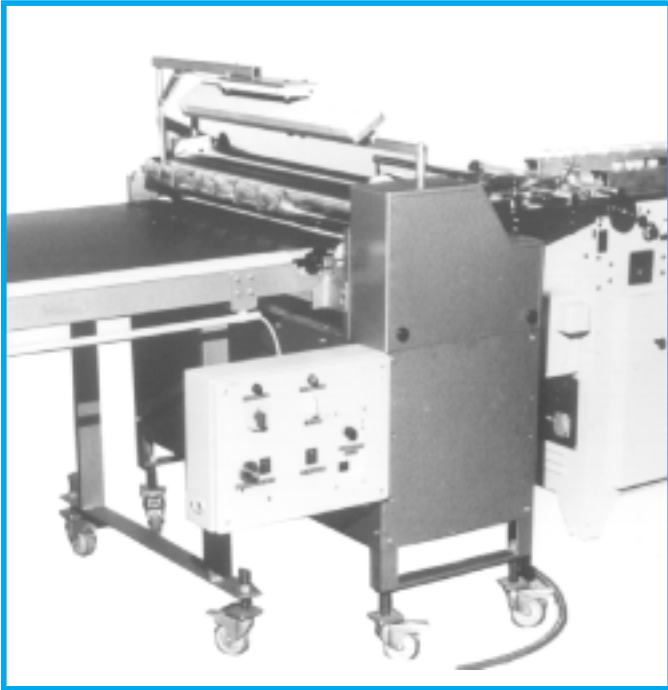


Mod. HEROLD with strip gluing attachment

### Special- and additional attachments:

- pressure bar attachment for cardboards etc.
- strip- and edge-gluing attachment
- creasing attachment
- gluerollers and glue tray in stainless steel
- glue circulation pump
- automatic suction feeder up to 480 mm

# *Sumbel* - Gluing Machines



## **Model SENATOR**

Two roller gluing machine with topside gluing system and 3 m conveyor belt, inclusive pressure bar attachment for carton etc. adjustable motorspeed, motordrive 230 V. Ac. or 400 V. DC

Working size: 350, 500, 650, 800, 950 mm

### **Options:**

- as table model without conveyor,
- hot glue processing
- strip-gluing attachment
- rollers and glue tray in stainless steel,
- glue circulation pump,
- automatic suctions feeder up 480 mm

# *Sumbel* - Edge Gluers

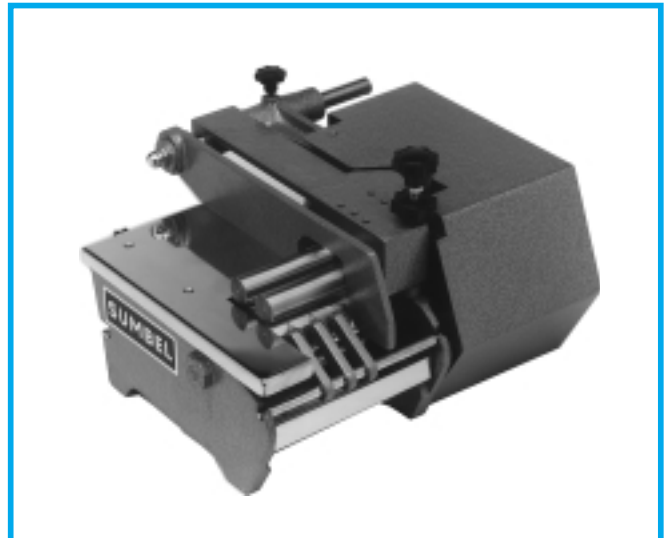
## **Model PERKEO**

Single roller edge gluer for paper, cardboard, leather etc. adjustable working size from 2 mm upwards, motordrive 230 V. AC or other voltages.

**Working size:** 60, 90, 120, 150 mm

### **Options:**

- adjustable speed
- stainlesssteel rollers



## **Model CORONEL**

Two roller edge gluer with adjustable speed, motordrive 230 V. AC or other voltages, for paper, cardboard, leather etc. Adjustable working size from 2 mm upwards .

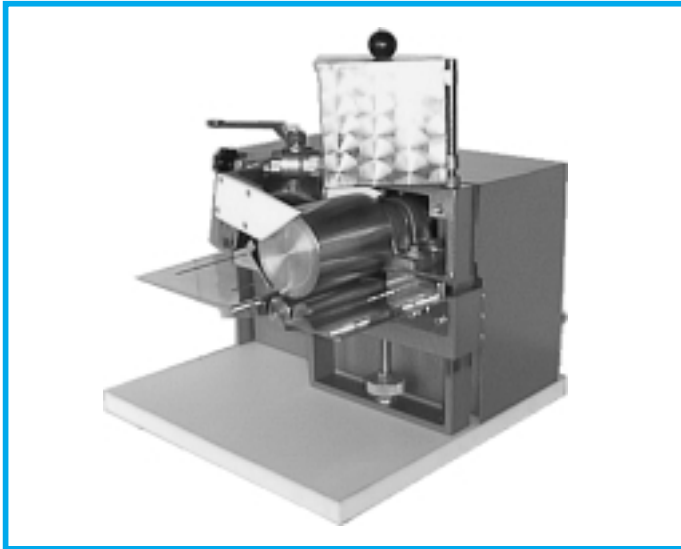
**Working size:** 60, 90, 120, 150 mm

### **Options:**

- Hot glue attachment
- stainlessstell rollers
- special roller sizes



# *Sumbel* - Edge Gluers



## **Model MERCUR**

Single edge top roller gluer for cold glue, adjustable speed, motordrive 230 V. AC or other voltages for paper, cardboard, leather etc. adjustable working size from 3 mm upwards

**Working size:** 60, 90, 120 mm

### **Options:**

- glueroller and glue tray in stainless steel
- larger roller sizes on request

# *Sumbel* - Rotary Pressing Machines

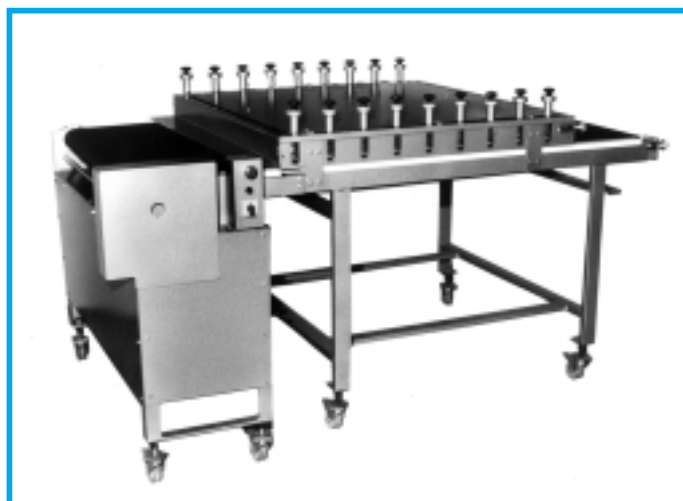
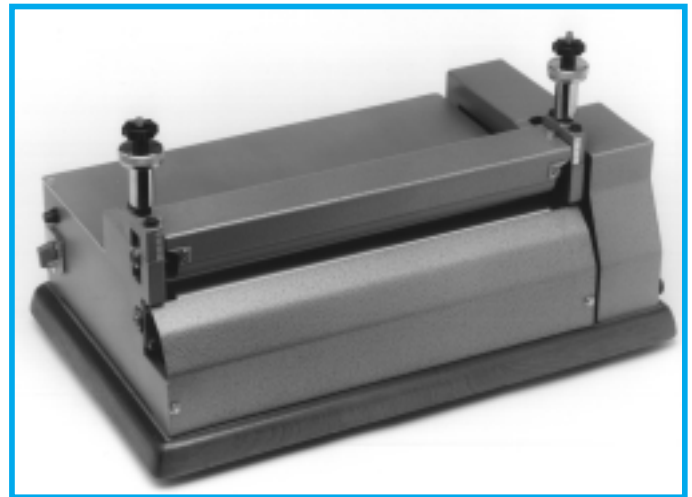
## **Model REGENT**

Down pressing machine for high speed combining of glued materials such as paper to chipboard. Combined material thickness up to 30 mm, uniform pressure, motordrive 230 V. AC or 400 V DC or other voltages.

**Working sizes:** 500, 650, 800, 1050 mm

### **Options:**

- portable stand on request



## **Model BANDERA**

Conveyor belt pressing machine for smooth and fast pressing of folding boxes, cartons etc. Adjustable pressure of each of the 5, 7, or 9 pressing stations, adjustable speed, motor drive 230 V. AC or other voltages..

**Working sizes:** 500, 650, 800, 1050 mm

### **SUMBEL GMBH**

28197 Bremen - Carl-Stockhinger-Str. 5 - Germany  
Telf. ++49 (421) 544078 - Fax ++49 (421) 544071  
Homepage: <http://www.sumbel.com> - E-Mail: [sumbel@t-online.de](mailto:sumbel@t-online.de)