

# MODEL 67-T4 CORN TORTILLA BAGGER



# MODEL 67-T4 CORN TORTILLA BAGGER



The Model 67-T4 infeed automatically indexes a random flow of stacked tortillas so that the output of several ovens can combine into one labor saving system.

## FEATURES:

- Three directional bag scoop movement
- Dual bag magazines for quick bag changes
- Air lifted bag tables with level control
- Empty Bag Sensor
- Flighted infeed with product repositioner
- Controlled heater removes moisture from bottom tortilla
- Simplified design for reliability and low maintenance
- Electro zinc plated frame with locking aluminum guards
- Indexing and bag loading functions are visible and accessible

## OPTIONS:

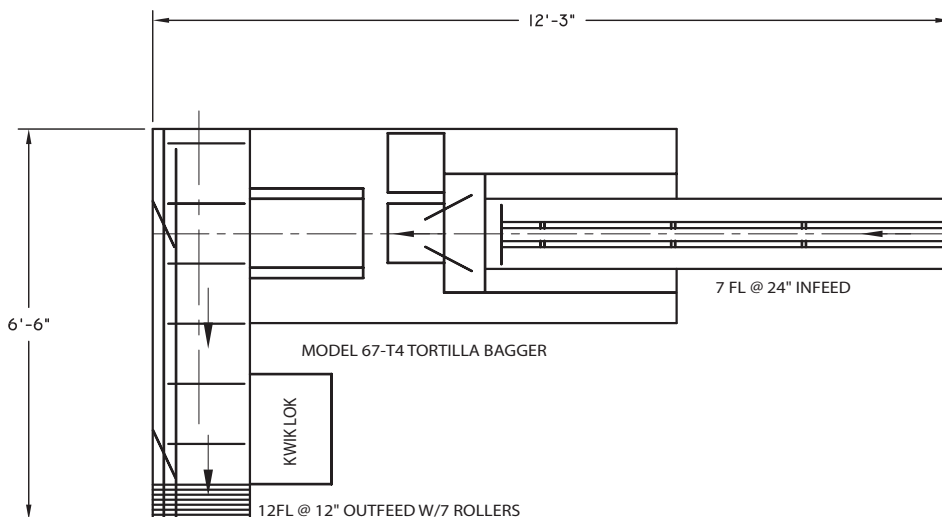
- Extended infeed lengths
- Curved crossfeed
- Bag scoops and pushers for product heights up to 6" [508mm]
- Left and right hand, reverse, and in-line layouts
- Custom electrical control requirements
- Plastic wire tie, plastic tab, and sealer bag closers
- Imprinters for bags, plastic wire, and plastic tabs

## SPECIFICATIONS:

- Speed ranges -----30-60 or 20-40 packages per minute
- Min./max. product size range -----10 to 60 count stacks, 5"-8" [127mm - 206mm] Dia
- Electrical requirements -----208/230/380/460 v, 3 ph, 50/60 hz, 1 hp (1 kw)
- Air requirement -----5 cfm @90 psi dry filtered air

## TECHNICAL LAYOUT:

LEFT HAND SHOWN (RIGHT HAND AVAILABLE)



For more information please contact:

United Bakery Equipment Co.

West Coast Sales & Manufacturing  
 1921 S. Laurel Park Road  
 Rancho Dominguez, CA 90220  
 Tel: (310) 635-8121  
 Fax: (310) 635-8171  
 sales@ubeusa.com

Mid-West Sales & Manufacturing  
 15815 W.110th  
 Lenexa, KS 66219  
 Tel: (913) 541-8700  
 Fax: (913) 541-0781  
 officeks@ubeusa.com

www.ubeusa.com

(November-2004)