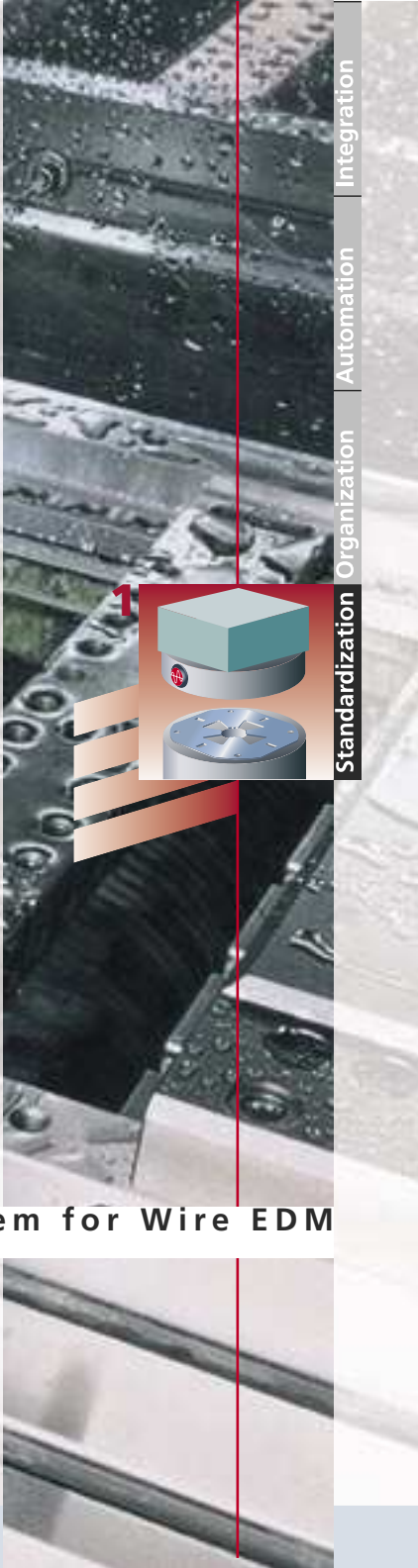


EROWA Wire EDM Tooling System



The modular tooling system for Wire EDM



EROWA®
System solutions
from one single source

«We save 660 productive hours a year. This makes us highly competitive!»

Free your valuable WEDM centers from unproductive setting-up and presetting time. EROWA's Wire EDM Tooling System will enable you to generate considerably higher profits from your investments.

Resetting costs time.

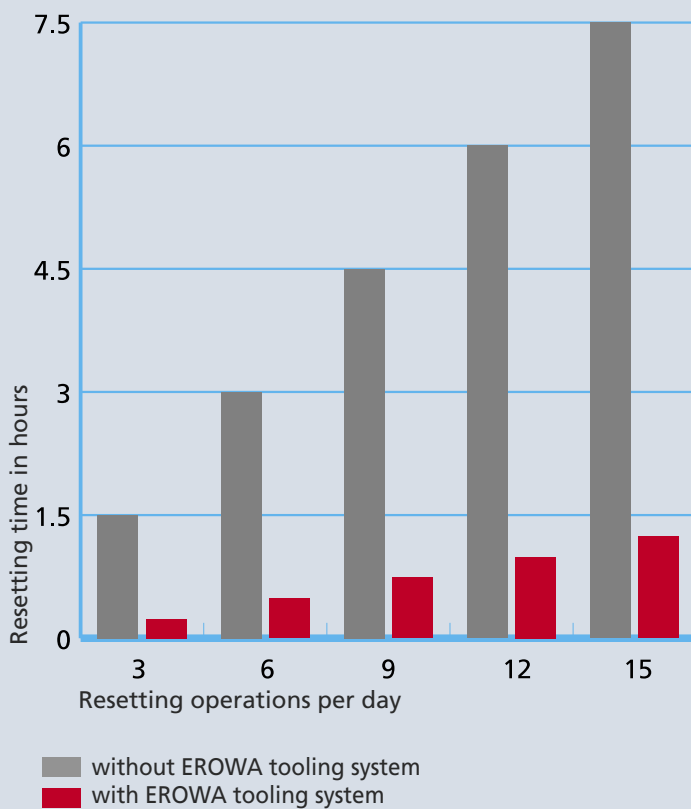
Time is money

Resetting costs money.

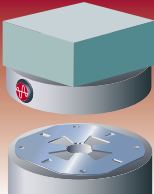
Investment calculation

Investment in tooling system:	\$ 20,000.–
Productive hours gained per year:	3 hours x 220 days
Hourly rate, machine:	\$ 60.–
Additional gain per year:	660 hours x 60 = \$ 39,600
Amortization of tooling system:	20,000 : 39'600 = 0.5 year

An optimal utilization of machines is a central factor for competitiveness.



(1x resetting operation ~ 30 minutes)



The right choice:
The expandable EROWA Wire EDM
Tooling System.
It grows according to your
requirements.



While the next order is being prepared, the machine remains productive. Set-up is carried out in an optimal environment and without any time pressure. Machining times are reduced to a considerable extent since no set-up has to be done on the machine itself.

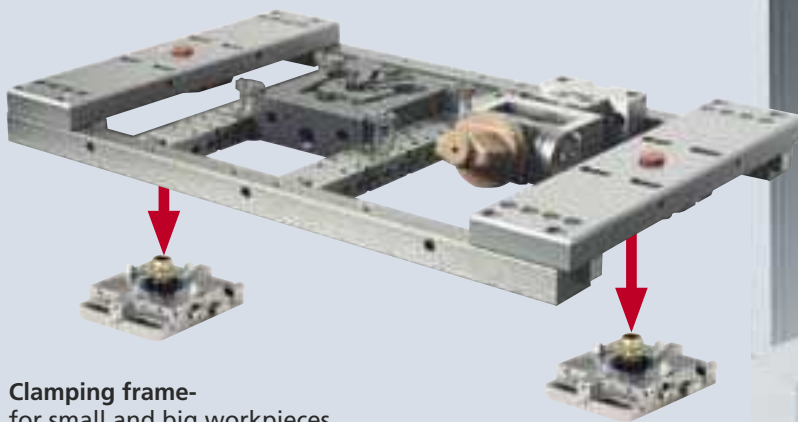
«I have enough time for careful and correct preparation while the machine is running!»



Z-Vario – every workpiece at the correct height.

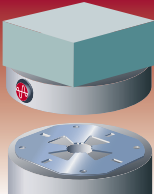


PreSet 3D CNC – presetting made easy.

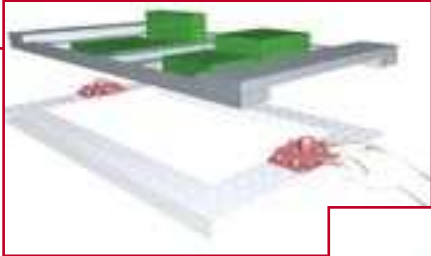


Clamping frame – for small and big workpieces.





Express job? – Pleased to do it!



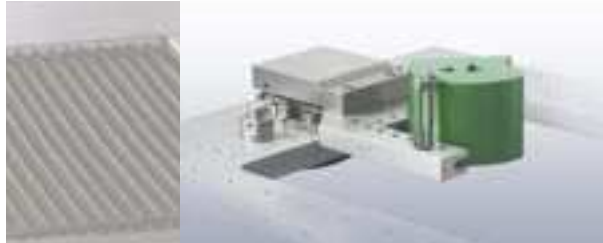
Loading Robot – for more machine autonomy at night and on weekends.



EROWA Lift – to take care of your back and easy on the machine.

Find a workpiece you can't clamp!

The right solution for every application. With well-thought-out combinations of vises, clamping elements and clamping beams, any conceivable workpiece can be clamped. The repeatability of EROWA's Wire EDM tooling system allows for workpieces to be preset outside the machine and for safe automatic loading. Ongoing jobs can be interrupted for express jobs and then continued later.



The universal vise - serves virtually any application.



Multiple palletizing increases machine autonomy. Unmanned shifts can be put to use.



The perfect connection for electrode manufacturing.



Big workpieces are clamped singly.

- Reset quickly
- Clamped with precision
- Production time utilized



Free access to wire guides even if the workpieces is only a few millimeters thin.

EROWA Wire EDM Tooling System: clamping elements for all

workpieces -
basic
equipment for
every machine

Clamping elements
for fixtures

ER-033958

ER-031952



Fixtures
for adapters

ER-031945



Adapters
for interfaces

ER-033955

ER-031942



ER-037888

Interface
to machine table

ER-040641



ER-016914



ER-008231



ER-008875



ER-008873



ER-007990



ER-008220



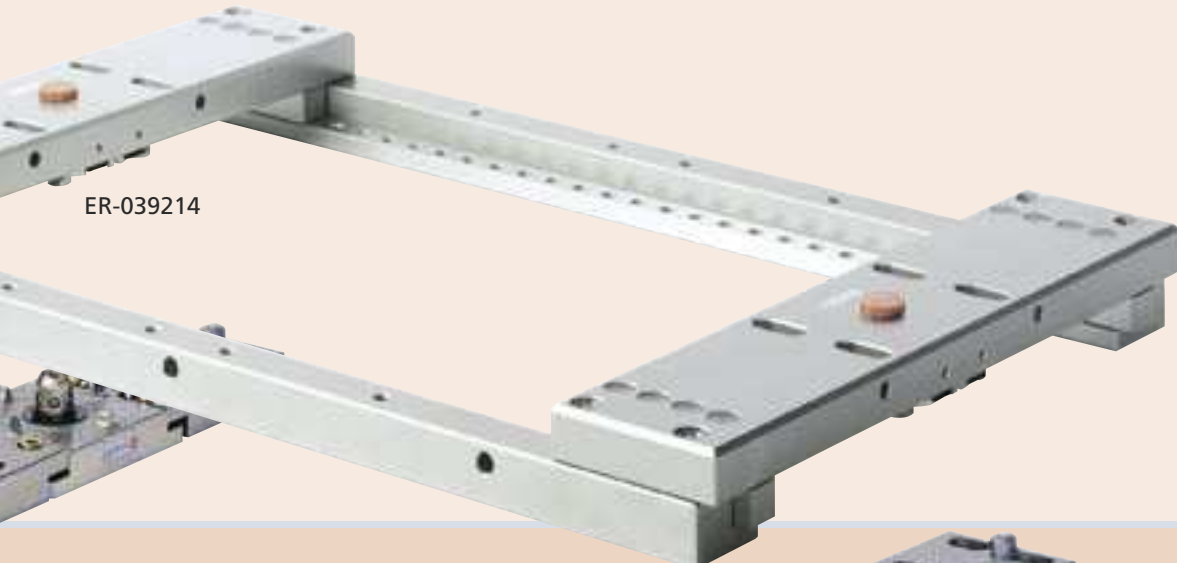
ER-017645



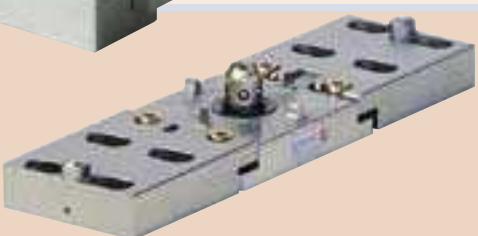
ER-030110



ER-039214



ER-032035



ER-008221



ER-029229



ER-029228



ER-018940



ER-025895



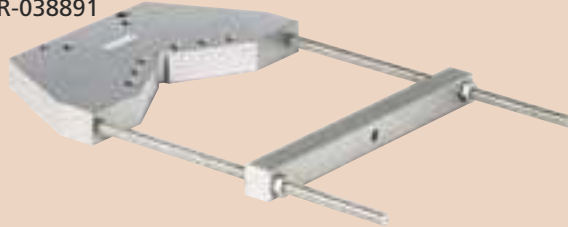
ER-039505



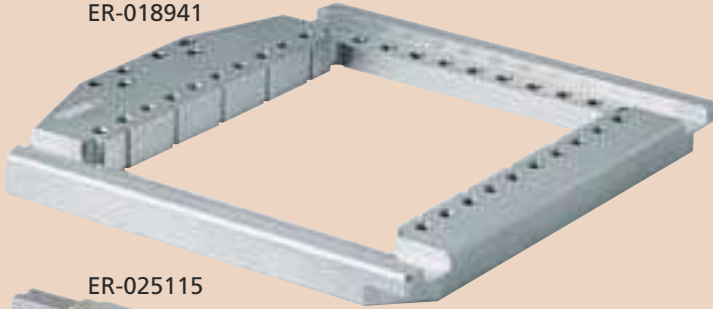
ER-019248



ER-038891



ER-018941



ER-018937



ER-028425



ER-025115



ER-038710



ER-033974



ER-030678



ER-039795



ER-030923



ER-033933

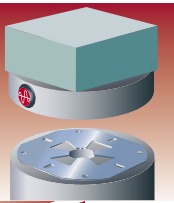


ER-035714

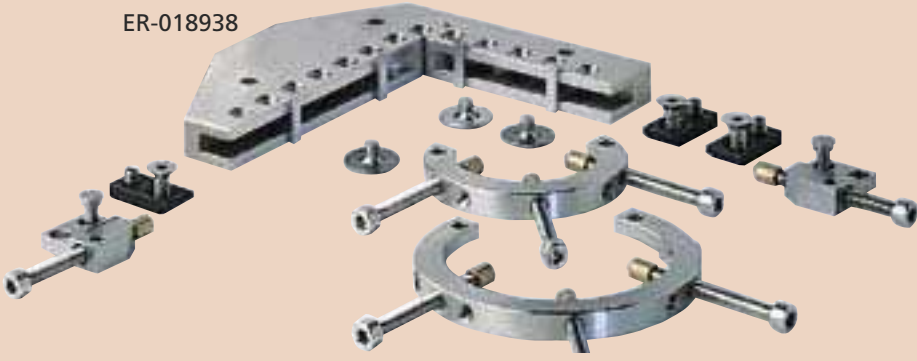


ER-035715





ER-018938



ER-008814



ER-008842



ER-036508



ER-007935



ER-008856



ER-016691



ER-014722



ER-014698



ER-039504



ER-012727



ER-007877



ER-038711



ER-028471



ER-017198



ER-007852

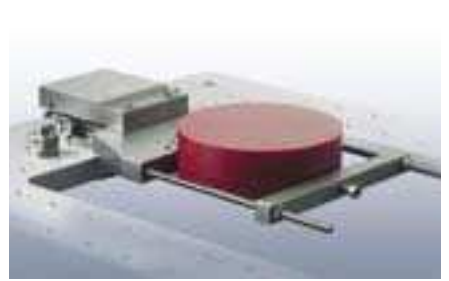


ER-022583





Scrap is removed next to the machine. The finishing cut is carried out in the same clamping process.



Special fixture for **cylindrical parts**. Fitted to a pendulum holder, the workpiece can be adjusted in three axes.

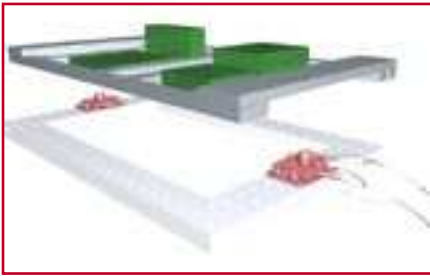


Single palletization in a manned shift: this is where the tricky jobs are done.

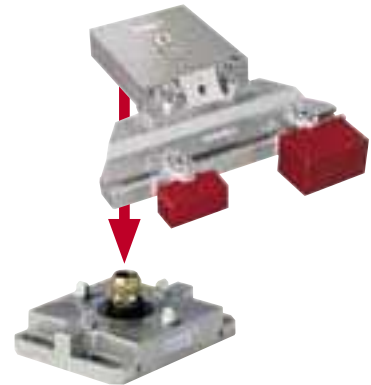


Combination of frame and UnoSet for electrode machining.

Well-thought-out, precise, variable and extendable: **EROWA Wire EDM Tooling**

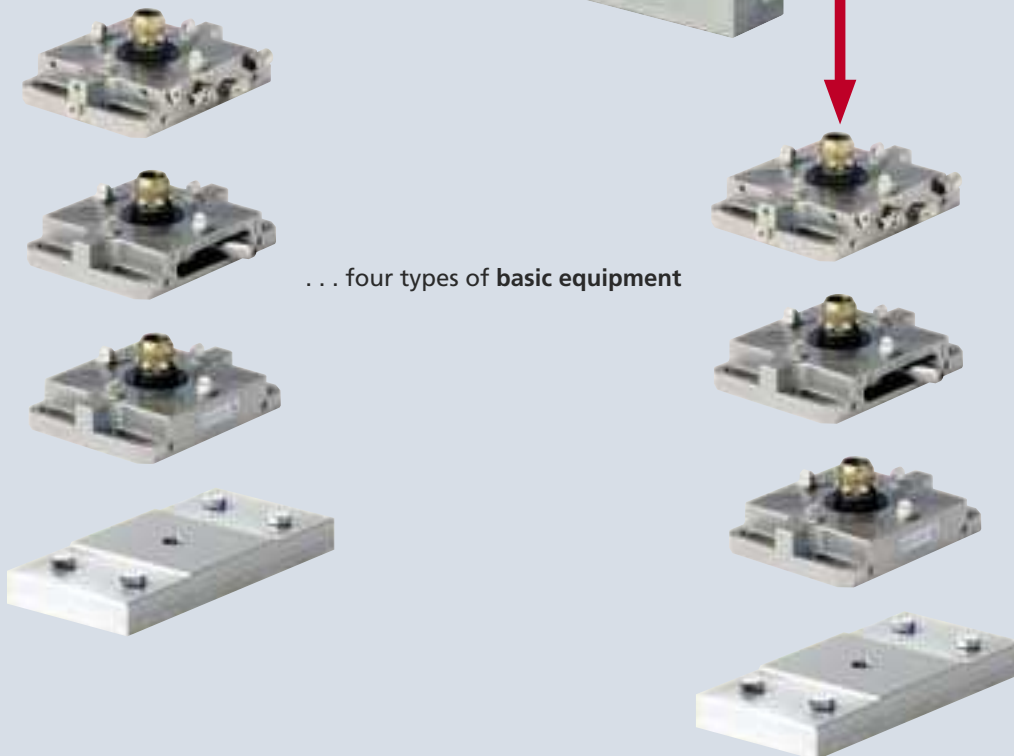
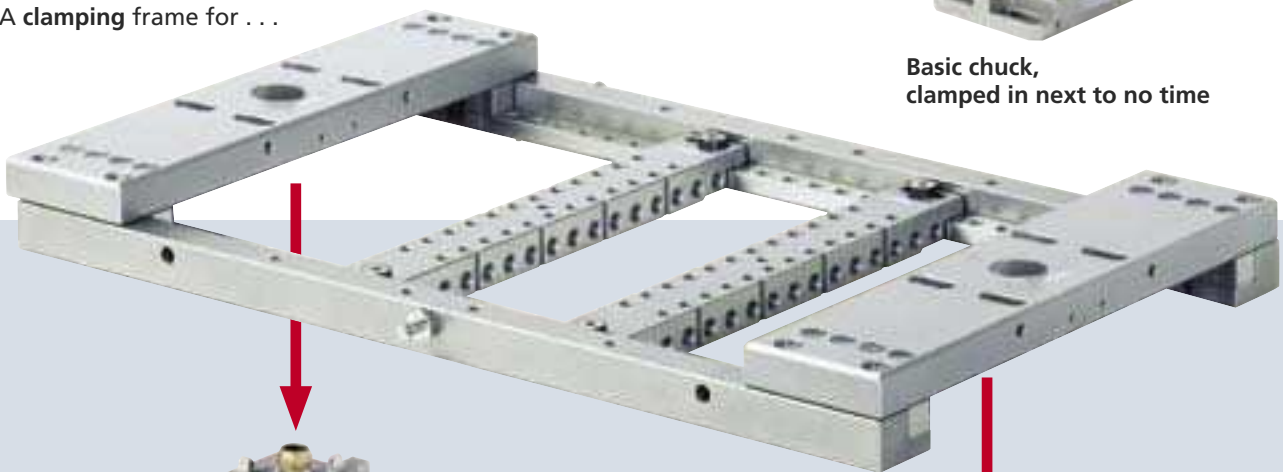


Easily removed when workpieces become too big. The base can be re-mounted and ready for action within 30 minutes.



Basic chuck, clamped in next to no time

A clamping frame for ...



... four types of basic equipment



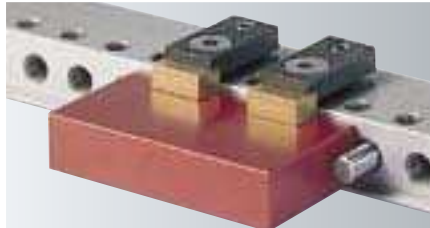
The support lifts the clamping beam to Z=0.



Clamping as in a vise: with threaded pins and clamping beams.



Use removable supports where they make sense. Thread in EDM wire through the special grooves.



Accurately positioned with a stop pin.



Mini spacer support for small parts.



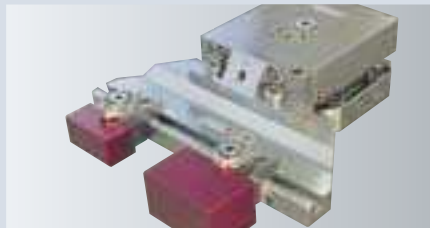
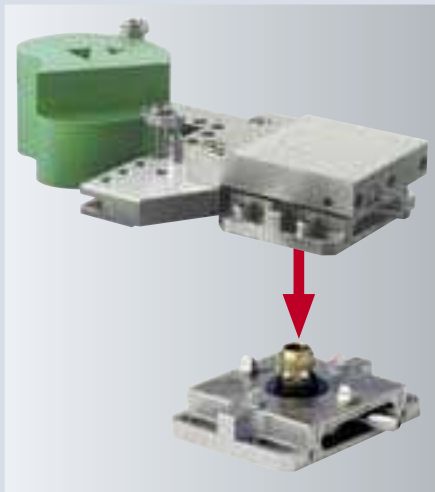
Adjustable in all axes: the pendulum holder.



For free wire guide access: the flat vise.



A quickly adapted vise.

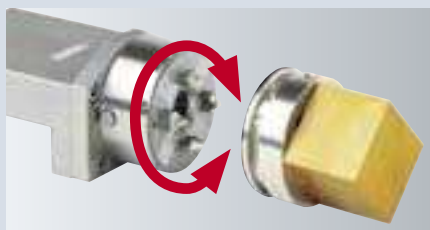


Rearrange things with modular elements.



For particular angles: continuously adjustable around 90°.

Single palletization:
On the same basis as clamping frames. Well-thought-out vises for the dexterous attachment of workpieces.



Indexation around 4x90°, positioning guaranteed in 0.002mm accuracy.



Vises with continuously rotatable clamping part.

Save time and money with EROWA

Resetting without EROWA



1 Remove machined part



2 Clean the base surfaces



3 Position new workpiece



4 Look for fittings



5 Attach workpiece with bolts and brackets



6 Align workpiece



7 Move to starting/reference point

START after 30 minutes

Resetting with EROWA



1 Open chuck, remove holder and workpiece

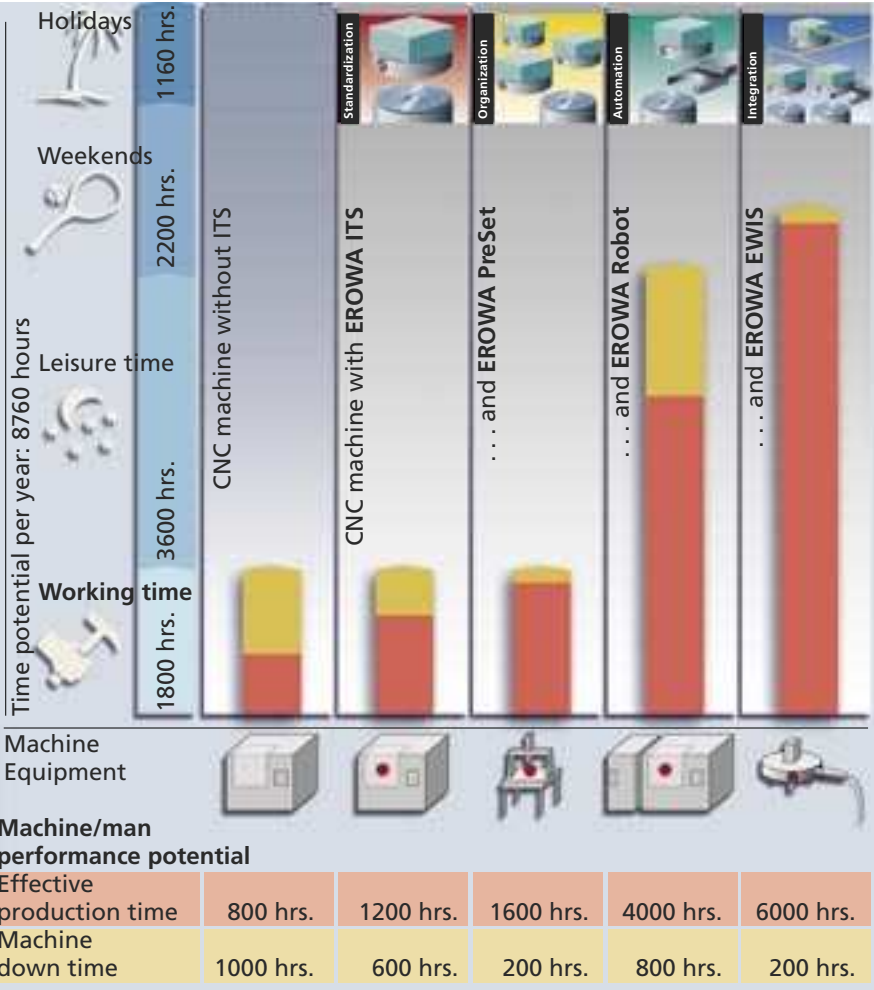


2 Insert preset workpiece with holder and clamp it

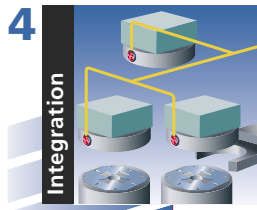


3 Move to starting/reference point

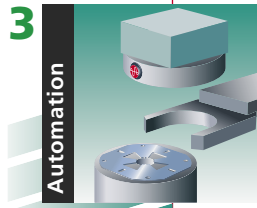
START after 5 minutes



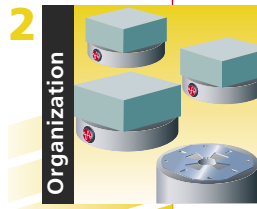
Work out the starting coordinates, determine the position of workpieces in space, and carry out quick intermediate checks: these are the jobs that are done substantially more efficiently on a measuring station than on the WEDM center.



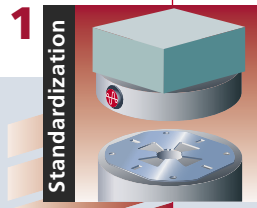
Software



Loading systems



Presetting



Tooling system

You have taken the first step into a productive future. Further steps will follow. With EROWA's Wire EDM Tooling System, you will be optimally prepared.

The next step is up to you.

Important matters require planning. And your next step is certain to be such an important matter. After all, you are setting off into a new, rational age. We will gladly accompany you on your way with advice, in daily operating procedures, so that you will know at any time what you are letting yourself in for.

The nearest EROWA agency is not far away. Take that important step.

USA

EROWA Technology, Inc.
North American Headquarters
2535 South Clearbrook Drive
Arlington Heights, IL 60005
Tel. 847 290 0295, Fax 847 290 0298
e-mail: info@erowatech.com

Germany

EROWA System Technologien GmbH
Gewerbepark Schwadernmühle
Rossendorferstrasse 1
D-90556 Cadolzburg b. Nbg.
Tel. 09103 7900-0, Fax 09103 7900-10
e-mail: info@erowa.de

Singapore

EROWA South East Asia Pte. Ltd.
20 Loyang Street
Loyang Industrial Estate
Singapore 508849
Singapore
Tel. 6542 02 38, Fax 6542 03 47
e-mail: sales.singapore@erowa.com

Brasil

EROBA Tecnologia Ltda.
Rua Maestro João Gomes de Araujo,
106-Cj. 92, Bairro Agua Fria
02332 020 São Paulo-SP
Brazil
Tel./Fax. 011 6959 6722
Mobile: 011 9962 8077
e-mail: brasil@erowa.com
www.erowa.com

Switzerland

EROWA AG
Knutwilerstrasse 3
CH-6233 Büron
Tel. 041 935 11 11, Fax 041 935 12 13
e-mail: info@erowa.com
www.erowa.com

Spain

EROWA Technology Ibérica S.L.
Enamorados, 103. Local 5
E-08026 Barcelona
Tel. 093 265 51 77, Fax 093 244 03 14
e-mail: erowa.info@facilnet.es

Japan

EROWA Nippon Ltd.
Shiba Shimizu Bldg.
2-3-11 Shiba Daimon, Minato-ku
105-0012 Tokyo
Tel. 03 3437 0331, Fax 03 3437 0353
e-mail: info@erowa.co.jp
www.erowa.co.jp

Sweden

EROWA Nordic AB
Salagatan 24
S-16353 Spånga
Tel. 08 36 42 10, Fax 08 36 53 91
e-mail: info@erowa.se

Italy

EROWA Tecnologie S.r.l.
S.S. 24 km 16,200
10091 Alpignano (TO)
Tel. 011 9664873, Fax 011 9664875
e-mail: info@erowa.it

France

EROWA Distribution France Sàrl
PAE Les Glaisins
12, rue du Bulloz
F-74940 Annecy-le-Vieux
Tel. 04 5064 0396, Fax 04 5064 0349
e-mail: info@erowa.tm.fr

China

SHANGHAI HANOWA LTD.
Precision Mechanics Engineering
G/F, No. 24 Factory Building House
69, Gui Qing Road
200233 Shanghai
Tel. 021 6485 5028, Fax 021 6485 0119
e-mail: hanowa@online.sh.cn